

Cuban Journal of
Forest Sciences

CFORES

Volume 11, Issue 1; 2023

Original article

Modelo de dinámicas auto-organizativas en un bosque semidecíduo micrófilo de Cuba Oriental: un enfoque hacia la restauración

Model of self-organizational dynamics in a semi-deciduous microphyllous forest in eastern Cuba: a restoration approach

Modelo de dinâmica auto-organizacional em uma floresta semi-decídua micro-filhosa no leste de Cuba: uma abordagem de restauração

Arturo Salmerón López^{1*} , Gretel Geadá López² 

¹Centro Oriental de Ecosistemas y Biodiversidad (BIOECO), Santiago de Cuba. Cuba.

²Universidad de Pinar del Río "Hermanos Saíz Montes de Oca". Pinar del Río, Cuba.

*Autor para la correspondencia: arturo@bioeco.cu

Recibido: 2023-02-09.

Aprobado: 2023-03-06.

ABSTRACT

The use of systems modeling as a tool to simulate the dynamics in vegetal communities as responses to disturbances constitutes an alternative for management in protected areas. The objective of this study is to develop a model to simulate the possible self-organizing dynamics in the composition and functional structure of the microphyllous semi-deciduous forest under different disturbance scenarios. Population change equations for dynamogenetic species were determined based on the



Leslie matrix, considering functional type and age structure. A conceptual model of the system is defined, that integrates the previous information available on functional composition, structure and interactions. The results of the simulations showed that disturbances occurred in some sectors of the area led the system to equilibrium states very different from the conserved states. The composition, structure, and functional interactions defined in the forest, together with local disturbances, condition the self-organizing dynamics of the system, which can lead to more than one state of equilibrium through different successional trajectories. These aspects facilitate the taking of actions for ecological restoration.

Keywords: System dynamics models, disturbances, functional types, structure, nonlinear interactions.

RESUMEN

La utilización de modelos de sistemas como herramienta para simular la dinámica en las comunidades vegetales como respuestas a las perturbaciones constituye una alternativa para la gestión en áreas protegidas. El objetivo de este estudio es desarrollar un modelo para simular las posibles dinámicas auto-organizativas en la composición y estructura funcional del bosque semideciduo micrófilo bajo diferentes escenarios de perturbación. Se determinaron ecuaciones de cambio poblacional para especies dinamo-genéticas partiendo de la matriz de Leslie, considerando tipo funcional y estructura etaria. Se define un modelo conceptual del sistema que integra la información previa disponible sobre composición funcional, estructura e interacciones. Los resultados de las simulaciones mostraron que perturbaciones ocurridas en algunos sectores del área llevaron al sistema a estados de equilibrio muy diferentes de los estados conservados. La composición, estructura e interacciones funcionales definidas en el bosque, de conjunto con las perturbaciones locales, condicionan las dinámicas auto-organizativas del sistema, que pueden llevar por diferentes trayectorias sucesionales a más de un estado de equilibrio. Estos aspectos, facilitan la toma de acciones para la restauración ecológica.

Palabras clave: Modelos de dinámica de sistemas, perturbaciones, tipos funcionales, estructura, interacciones no lineales.



SÍNTESE

O uso de modelos de sistemas como uma ferramenta para simular dinâmicas em comunidades de plantas em resposta a distúrbios é uma alternativa para o gerenciamento de áreas protegidas. O objetivo deste estudo é desenvolver um modelo para simular possíveis dinâmicas auto-organizacionais na composição e estrutura funcional de floresta semi-decídua micro-filhosa sob diferentes cenários de distúrbios. As equações de mudança demográfica para espécies dinâmogênicas foram determinadas a partir da matriz Leslie, considerando o tipo funcional e a estrutura etária. É definido um modelo conceitual do sistema que integra as informações disponíveis anteriormente sobre composição funcional, estrutura e interações. Os resultados das simulações mostraram que as perturbações em alguns setores da área levaram o sistema a estados de equilíbrio muito diferentes dos estados conservados. A composição, estrutura e interações funcionais definidas na floresta, juntamente com as perturbações locais, condicionam a dinâmica auto-organizadora do sistema, que pode levar através de diferentes trajetórias sucessionais a mais de um estado de equilíbrio. Estes aspectos facilitam a ação para a restauração ecológica.

Palavras-chave: Modelos de dinâmica do sistema, distúrbios, tipos funcionais, estrutura, interações não lineares.

INTRODUCTION

Self-organizing processes that occur after disturbances in plant communities, involve changes in populations and are strongly influenced by the functional traits of plants (Gillison *et al.*, 2013, Verheijen *et al.*, 2015), by the functional types present (Ostertag *et al.*, 2015, Samerón-López *et al.* 2016a, Vásquez-Valderrama and Solorza-Bejarano, 2018) and by the nature of plant-to-plant interactions (Salmerón-López and Geada-López 2018, Navarro-Cano *et al.*, 2019).

Functional traits influence species presence, age structure, and regenerative states of the system in areas subjected to different levels of disturbance. In addition, these traits allow the definition of plant functional types, which constitute a valuable tool for the diagnosis of processes associated with disturbances (Gillison *et al.*, 2013), in the long-term monitoring of ecosystem management strategies and specific restoration practices (Kooyman and Rossetto 2008, Vásquez-Valderrama and Solorza-Bejarano, 2018).



The use of system dynamics modeling is a way to understand possible changes in communities based on changes in composition, structure, interactions and functioning, but for this, it is necessary to incorporate information on the population and functional dynamics of most species and to identify the species most sensitive to changes in the system.

Ethnically structured matrix models are the basis for population viability studies and for the assessment of plant population status (Chirakkal and Gerber 2010, Bialic-Murphy *et al.*, 2022). The so-called Leslie matrix is a convenient tool in the description of demographic processes (Damgaard 2005), which considers densodependence, transition probabilities and fecundity. In relation to densodependence in population models, it should be taken into account that when age classes (seedlings, juveniles and adults) are present, these interact in different ways, depending on the functional type to which a species belongs (Valiente-Banuet and Verdu 2008, Maestre *et al.*, 2009, Soliveres *et al.*, 2011, Salmerón-López and Geda-López 2018).

The semi-deciduous microphyllous forest of the Siboney Juticí Ecological Reserve has been previously studied by Salmeron-López *et al.* (2016a, b; 2017); Salmeron-López and Geda-López (2018) from an ecological perspective. In this forest, three functional types of plants are defined according to the role they play in post-disturbance dynamics: cover, colonizing and stabilizing; and only a part of those (dynamogenetic) promote changes during recovery (Salmeron-López *et al.* 2016a). Significant differences in regenerative structure are reported among functional types in response to disturbances, as well as among sites Salmerón-López *et al.* (2016b). Both facilitation and competition interactions are documented in sites subjected to different levels of disturbance in this forest. Facilitation is more frequent in moderately and highly disturbed sites, and is more demanded by seedlings and juveniles of colonizing species. Competition is more frequent among adults of almost all functional types on lightly disturbed sites (Salmeron-López and Geda-López 2018).

Currently, disturbed sites with different characteristics in terms of composition and functional structure exist in the forest (Salmeron-López *et al.*, 2016a). In some sectors, although disturbances have ceased, recovery remains unachieved. Meaning, they have led the system to states of equilibrium that will not evolve to states compatible with the



conservation requirements of the protected area in the short or medium term, unless actions are taken to accelerate the recovery process.

Therefore, the objective of this study is to develop a model to simulate the possible self-organizational dynamics in the composition and functional structure of the semi-deciduous microphyllous forest under different disturbance scenarios.

MATERIALS AND METHODS

For the study of self-organizational dynamics, the species considered as dynamogenetic of the semideciduous microphyll forest were considered: *Adelia ricinella* L., *Amyris elemifera* L., *Banara minutiflora* (A. Rich.) Sleumer, *Bourreria virgata* (Sw.) G. Don. *Bursera simaruba* (L.) Sargent, *Citharexylum spinosum* L., *Coccoloba diversifolia* Jacq., *Colubrina elliptica* (Sw.) Brizicky et W. L. Stern, *Cordia gerascanthus* L., *Coulteria linnaei* (Griseb.) Acev.-Rodr., *Crossopetalum rhacoma* Crantz, *Croton lucidus* L., *Diospyros grisebachii* (Hiern.) Standl., *Erithalis fruticosa* L., *Erythroxylum havanense* Jacq., *Erythroxylum rotundifolium* Lunan, *Eugenia cowelli* Britton et P. Wilson, *Eugenia iteophylla* Krug et Urb, *Eugenia smonticola* (Sw.) DC., *Exostema caribaeum* (Jacq.) Roem. et Schult., *Guettarda cueroensis* Britton, *Guettarda elliptica* Sw., *Gymnanthes lucida* Sw., *Heterosavia bahamensis* (Britton) Petra Hoffm., *Melochia tomentosa* L., *Picrodendron baccatum* (L.) Krug et Urb. ex Urb., *Plumeria obtusa* L., *Pseudocarpidium avicennioides* (A. Rich.) Millsp. *Pseudocarpidium ilicifolium* (A. Rich.) Millsp., *Randia aculeata* L., *Rauvolfia ligustrina* Willd. ex Roem. et Schult., *Senna atomaria* (L.) H. S. Irwin et Barneby, *Sideroxylum salicifolium* (L.) Lam., *Tabebuia myrtifolia* (Griseb.) Britton var. *myrtifolia*, *Tecoma stans* (L.) Juss. ex Kunth, *Thouinia trifoliata* Poit, *Vachellia macracantha* (Humb. et Bonpl. ex Willd.) Seigler et Ebinger, *Zanthoxylum fagara* (L.) Sarg., *Zanthoxylum pistaciifolium* Griseb (Salmerón-López et al. 2016a). In addition, the functional types of responses to disturbances were considered: cover, colonizing and stabilizing, (Salmerón-López et al. 2016a) and the classification of sites according to the degree of disturbance: highly disturbed, moderately and lightly disturbed sites.



Conceptual model of the forest system

For the development of a conceptual model of the dynamics of the semi-deciduous microphyllous forest, the authors considered the information available from studies on composition by functional types, regenerative structure and interactions by Salmerón-López *et al.* (2016a, b) and Salmerón-López and Geada-López (2018).

Equations of change according to age classes and functional type

For each functional type, the equations of change were established starting from the Leslie matrix and considering the age classes defined by Salmerón-López *et al.* (2016b) (Equation 1, Equation 2, Equation 3, and Equation 4).

$$\begin{pmatrix} P(t+1) \\ J(t+1) \\ A(t+1) \end{pmatrix} = \begin{pmatrix} s_p & 0 & f \\ g_j & s_j & 0 \\ 0 & g_a & s_a \end{pmatrix} * \begin{pmatrix} P(t) \\ J(t) \\ A(t) \end{pmatrix} \quad [1]$$

From where:

$$P(t+1) = s_p * P(t) + 0 + f * A(t) \quad [2]$$

$$J(t+1) = g_j * P(t) + s_j * J(t) + 0 \quad [3]$$

$$A(t+1) = 0 + g_a * J(t) + s_a A(t) \quad [4]$$

Where:

$P(t)$, $P(t+1)$, $J(t)$, $J(t+1)$, $A(t)$ y $A(t+1)$ are the number of seedlings, juveniles and adults at t and $t+1$ respectively.

f is the fecundity of adults, understood as the number of new established seedlings appearing at $t+1$ due to adults present at t .

s_p , s_j and s_a are the survivals of seedlings, juveniles and adults respectively, understood as the number of individuals at time t that will remain as seedlings, juveniles or adults at $t+1$.

g_j and g_a are the gains of juveniles and adults at $t+1$, understood as the number of seedlings at t that transform into juveniles at $t+1$ (g_j) and the number of juveniles at t that transform into adults at $t+1$ (g_a).



In each equation, dense-dependence according to functional type was considered. For each species, population vitality rates were estimated in the equations from field data obtained during monitoring of the number of individuals in each age class, during the period from 2016 to 2018. Monitoring during three consecutive years of individuals allowed estimating changes in the numbers of seedling, juvenile and adult individuals of each species and whether these changes, in the case of seedlings and juveniles, are due to the death of the individual or the passage of the individual to the next age class.

For the estimation of life history traits and rates of change for each of the species considered as dynamogenetic, $(\phi_i, d_{pi}, \gamma_{j_i}, d_{j_i}, \gamma_{a_i}$ y $d_{a_i})$ are detailed in Salmerón-López (2016).

Simulation of the post-disturbance responses of the system

For the simulation of the post-disturbance temporal evolution of the populations, a system dynamics model was developed for each functional type, starting from the equations of change. In all cases, the following aspects were taken into account: the nonlinearity of population denso-dependence (due to intra- and interspecific interactions), environmental stochasticity and interactions (facilitation or competition) between species (Salmerón-López and Geada-López 2018). In all cases, STELLA 8.0 software was used for the development of the system dynamics models.

Three possible scenarios were generated for the simulation of disturbances: Scenario 1- starts with little disturbed level between years 100 to 120, then increases to moderately disturbed and in year 160 to very disturbed. Scenario 2 had high anthropogenic disturbances concentrated towards the beginning of the disturbance regime, which quickly raised the level to very disturbed. Scenario 3 begins with a medium level of disturbances from year 90 to year 180, and the evolution of the system when these ceases. In this case, the simulation was maintained up to 400 years to show how the functional groups respond.

Subsequently, the results of the simulations are compared with field data for the functional types in sites subjected to different levels of disturbance in the reserve. Based on the results of the field studies and simulations, recommendations are made for treatments for the semi-deciduous microphyllous forest in the reserve.



RESULTS

Conceptual model of the semi-deciduous microphyllous forest

In the semi-deciduous microphyllous forest of the Siboney Juticí Ecological Reserve, it was detected that in each functional type there was functional redundancy in several species. A group of these species were confirmed as true drivers of the recovery process (dynamogenetic species). Seven were classified as coverers, 10 as colonizers and only four as stabilizers (Salmerón-López *et al.*, 2016ab).

Covering species, mostly, were species with legume-shaped fruits, follicles or capsules with winged or sometimes self-healing seeds, light-demanding plants. The species that invade and cover the clearings in the ecotones corresponding to these forests that generate an initial forest cover quickly are included.

The colonizing species generally corresponded to those tolerant to shade in their initial stages. This functional type was located in sites corresponding to almost all levels of disturbance. In general, they were species with the ability to establish their seedlings and juveniles under the tree canopy of the former, once the clearings had been previously occupied by the ground cover, and to colonize spaces that already had a previous forest cover. Upon reaching adulthood, most of these species compete with the previously established ground cover.

Stabilizing species also included shade tolerant species, although in some cases this tolerance was not verified. Seedlings, juveniles and adults of these species were present in both moderately disturbed and lightly disturbed sites, but generally with few individuals in the former.

The growth rates of each species depended on the density of individuals of the same species and other species of the same functional type, as well as on the availability of open or covered spaces, according to the requirements of the functional type.



In the semi-deciduous microphyllous forest, anthropic disturbances such as clear-cutting, selective logging, crop establishment, charcoal production, weeding, grazing and fires have been observed. Some of these disturbances have a greater impact on adults of all or some of the species, such as clear-cutting, selective logging and charcoal production, while weeding, grazing or fires affect seedlings or juveniles more. Crop establishment affects all age classes. Several of these disturbances generate clearings in the vegetation, but the size of these depends on the type and magnitude of the disturbance.

In the forest, two types of these interactions were recognized: facilitation, when the interaction between two individuals was positive (one of them facilitates the other) and competition, when the interaction is negative (both compete for space or light). Adults of groundcovers on seedlings and juveniles of colonizers mostly guarantee facilitation, although some stabilizers have been verified as facilitators. Competition, mainly for light, occurs between adults of almost all functional types. These interactions also influence the rates of species increase, the magnitude of this influence was at the same time conditioned by the functional type and by the age of the interacting species.

The transit between age classes for each species was theoretically determined by the dependencies described above, but was verified differently according to the age class itself and the functional type to which the species corresponds. Changes in interactions with varying age class were verifiable in the field for several species.

Equations of change for functional types

The derivation of the equations of change described in Salmerón-López (2016) obtained those seedlings of all species, in all functional types and starting from this, the following equation was obtained (Equation 5):

$$P_i(t + 1) = P_i(t) + \phi_i \left(1 - \theta_p(t)\right) \left(1 - \Omega_p(t)\right) A_i(t) - d_{pi} \left(1 + \theta_p(t) + \Omega_p(t)\right) P_i(t) - g_{j_i} P_i(t) \quad [5]$$

Where:

P_i : Number of seedlings at time t .



A_i : Total number of adults of species i .

ϕ_i : Fertility coefficient of species i .

d_{pi} : Mortality of seedlings of species i .

K_{pi} : Carrying capacity of the site for seedlings of species i .

g_{ji} : Gain of juveniles of species i , understood as the number of seedlings of that species at t transformed into juveniles at $t + 1$.

The term $\theta_p(t)$ contains the dependence with respect to the density of seedlings of the species itself at the site. It represents the ratio between the seedlings already established in year t and those that the space available for the species can assimilate in that year. In other words, part of the carrying capacity for seedlings of the species has already been covered.

The term $\Omega_p(t)$ contains the dependence with respect to the density of seedlings of the rest of the species of the same functional type. It represents the ratio between the seedlings of the rest of the species already established in year t and those that the space available for those species, in the absence of species i , can assimilate. In other words, part of the carrying capacity for seedlings of the rest of the species of the same functional type, if species i did not exist, has already been covered.

The way in which both parameters depend on the available space is different for cover species and for colonizing and stabilizing species. For the juveniles of the groundcovers, starting from equation [3], the following equation was obtained (Equation 6 and Equation 7):

$$J_i(t + 1) = J_i(t) + \gamma_{ji} (1 - \theta_j(t)) (1 - \Omega_j(t)) P_i(t) - d_{ji} (1 + \theta_j(t) + \Omega_j(t)) J_i(t) - g_{aicb} J_i(t) \quad [6]$$

And for the colonizing or stabilizing ones:

$$J_i(t + 1) = J_i(t) + \gamma_{ji} (1 - \theta_{j_{c,e}}(t)) (1 - \Omega_{j_{c,e}}(t)) P_i(t) - d_{ji} (1 + \theta_{j_{c,e}}(t - \tau) + \Omega_{j_{c,e}}(t - \tau)) J_i(t) - g_{aic,e} J_i(t) \quad [7]$$

γ_{ji} : rate of increase of juveniles of species i .

d_{ji} : Mortality of juveniles of species i .



g_{aicb} ($g_{aic,e}$): Gain of adults from juveniles for covers (colonizing or stabilizing).

The terms $\theta_j(t)$ and $\theta_{j,c,e}(t)$ represent the ratio between the juveniles of groundcovers, or colonizers and stabilizers, already established in year t and those that the space available to the species can assimilate, according to functional type.

The terms $\Omega_j(t)$ and $\Omega_{j,c,e}(t)$ represent the proportion between the juveniles of the rest of the cover species, or colonizers and stabilizers, already established in year t and those that the space available for those species, in the absence of species i can assimilate.

The term $\theta_{j,c,e}(t - \tau)$ expresses the ratio between the number of juveniles of colonizing or stabilizing species i established in year t with respect to the number of juveniles that could assimilate a space equivalent to that which was covered by total adults (A_T) in year $t - \tau$, that is, $A_T(t - \tau)$, where τ is the average time a juvenile of species i takes to reach adulthood.

Similarly, $\Omega_{j,c,e}(t - \tau)$, expresses the ratio between the number of juveniles of the rest of the colonizing or stabilizing species established in year t with respect to the theoretical average carrying capacity of the space that was covered by total adults (A_T) in year $t - \tau$, in the absence of species i .

For adults of covering species and, for some colonizers such as *Gymnanthes lucida*, *Heterosavia bahamensis* and others that need open spaces to reach adulthood, starting from equation [4], the following equation was obtained:

$$A_i(t + 1) = A_i(t) + \gamma_{a_i}(1 - \theta_a(t))(1 - \Omega_a(t))J_i(t) - d_{a_i}[1 + \theta_a(t) + \Omega_a(t)]A_i(t) \quad [8]$$

γ_{a_i} : Adult gain of species i .

d_{a_i} : Mortality of adults of species i .

The term $\theta_a(t)$ expresses the ratio between the number of adults of the covering species (and colonizers or stabilizers whose adults demand light) established in year t , with respect to the number of adults that could assimilate the space available for that species. The term



$\Omega_a(t)$ represents the ratio between the number of adults of the rest of the covering species established in year t with respect to the number of adults that could assimilate the space available for those species in the absence of species i .

Other colonizers and some stabilizers may have reached adulthood beneath adult individuals of other species of any of the functional types that dominate the arboreal canopy, or their juveniles may have become adults when uncovered. These species, once juveniles are established, reached adulthood regardless of whether then they remain covered or not. In this case, *Adelia ricinella*, *Amyris elemifera*, *Erithalis fruticosa*, *Picrodendron baccatum* were found and considered as subtype 2.

For these species the equation [4] took the form (Equation 9):

$$A_{i,c,e2}(t+1) = A_{i,c,e2}(t) + \gamma_{a_i} \left(1 - \theta_{a,c,e2}(t-\tau)\right) \left(1 - \Omega_{a,c,e2}(t-\tau)\right) J_i(t) - d_{a_i} \left(1 + \theta_{a,c,e2}(t-\tau) + \Omega_{a,c,e2}(t-\tau)\right) A_{i,c,e2}(t) \quad [9]$$

The term $\theta_{a,c,e2}(t-\tau)$ expresses the ratio between the number of adults of colonizing or stabilizing species i established in year t with respect to the number of these that could assimilate a space equivalent to that which was covered by total adults (A_T) in year $t-\tau$, that is, $A_T(t-\tau)$, when the juveniles that give rise to these adults were established. τ is the average time juvenile of species i take to reach adulthood, whether or not the site of establishment remains covered.

Responses to disturbances in the semi-deciduous microphyllous forest

Annex 1 shows the modules that compose the system dynamics model elaborated from the equations of change to simulate self-organizing dynamics, the available information on functional types, regenerative structure and functional interactions (Salmerón-López 2016, Salmerón-López et al. 2016a, 2016b, Salmerón-López and Geda-López 2018), as well as the life history traits of dynamogenetic species obtained from field monitoring.

Figure 1 shows that all functional types are affected, particularly stabilizers. When performing an analysis for adults under the same Scenario 1 (Figure 2), it was observed that while covering adults maintained high numbers, those of colonizers almost cancelled out,



suggesting that colonizers maintained the abundance observed as seedlings or juveniles (Figure 1).

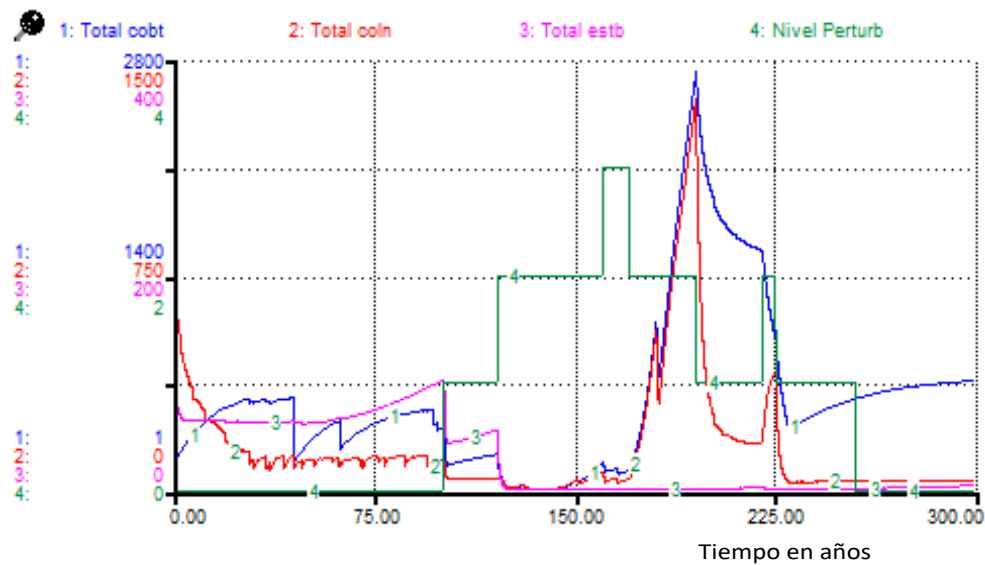


Figure 1. - Changes in the total number of individuals by functional type under the effects of disturbances (Scenario 1)

Note: Total cov: total cover, Total colo: total colonizers, Total stab: total stabilizers, Disturb level: disturbance level.

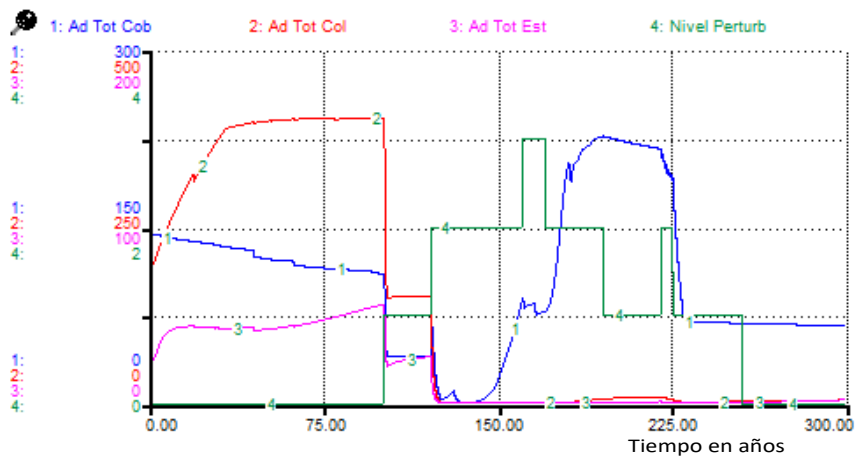


Figure 2. - Changes in total adults by functional type under the effects of disturbances (Scenario 1)

Note: Ad Tot cov: total adults of the cover, Ad Tot col: total adults of the colonizers, Ad Tot stab: total adults of the stabilizers, Disturb level: disturbance level.



Figure 3 shows the changes under Scenario 2, in this case the behavior for the individuals of the three functional types was similar to the previous case but with differences in the totals and proportions (Figure 3).

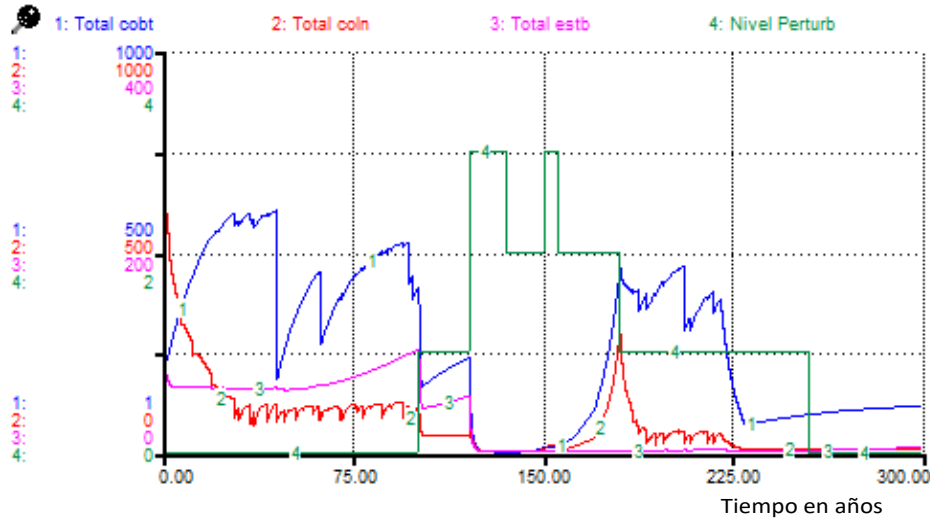


Figure 3. - Changes in the total number of individuals for the functional types due to disturbances (Scenario 2)

Note: Total cov: total coverts, Total colo: total colonizers, Total stab: total stabilizers, Disturb level: disturbance level.

For the adults of all functional types, although the total number of individuals was higher for cover species in the post-disturbance period, the predominant adults were of colonizing species, contrary to what was observed for Scenario 1 (Figure 1) and (Figure 4).

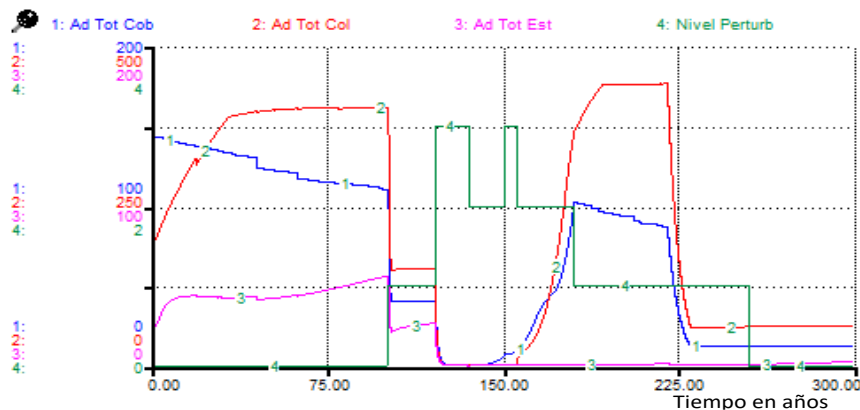


Figure 4. - Changes in total adults for functional types due to disturbances (Scenario 2)



Note: Ad Tot cov: total adults of the coverts, Ad Tot col: total adults of the colonizers, Ad Tot stab: total adults of the stabilizers, Disturb level: level of disturbance.

Figure 5 shows the behavior of the totals by functional type during the occurrence of "Scenario 3", in which the most affected functional type is the stabilizers, which only after 300 years begin to increase their abundance of stabilizer individuals (Figure 5).

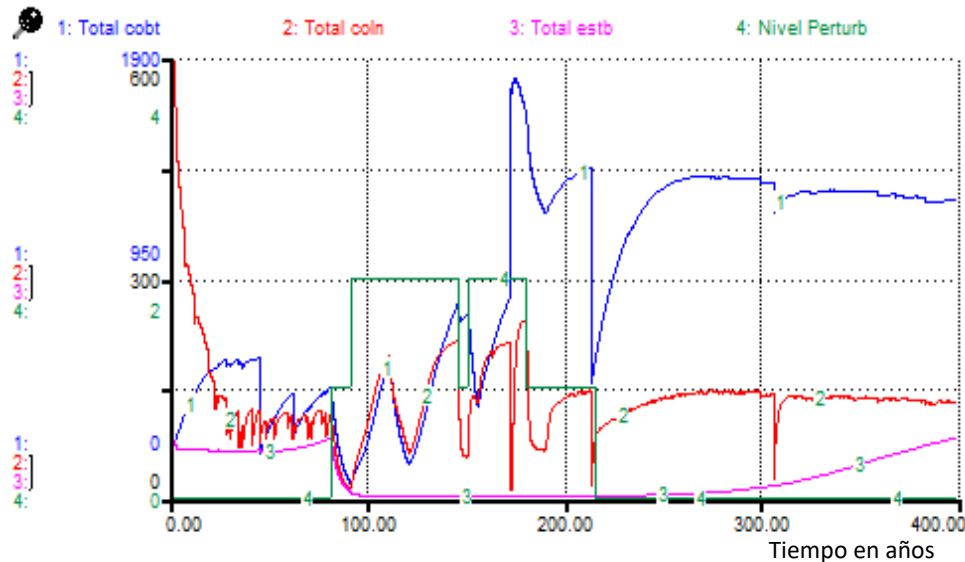


Figure 5. - Total individuals by functional type in disturbance (Scenario 3)

Note: Total cov: total cover, Total colo: total colonizers, Total stab: total stabilizers, Disturb level: disturbance level.

DISCUSSION

Conceptual model of the semi-deciduous microphyllous forest

The conceptual model presented here is a synthesis of the knowledge provided by previous studies of this system, in terms of its functional characteristics and the elements to be taken into account in the study of its self-organizational dynamics.

The equations of change over time for the functional types have a similar form because they are based on the Leslie matrix (equation 1) considering the same age classes in each case. The essential differences in these equations are given by the terms $\theta(t)$ and $\Omega(t)$ for



Annex I

System dynamics models

Module for Functional Types

Covering functional type

The model corresponds to the covering functional type (Figure 6).

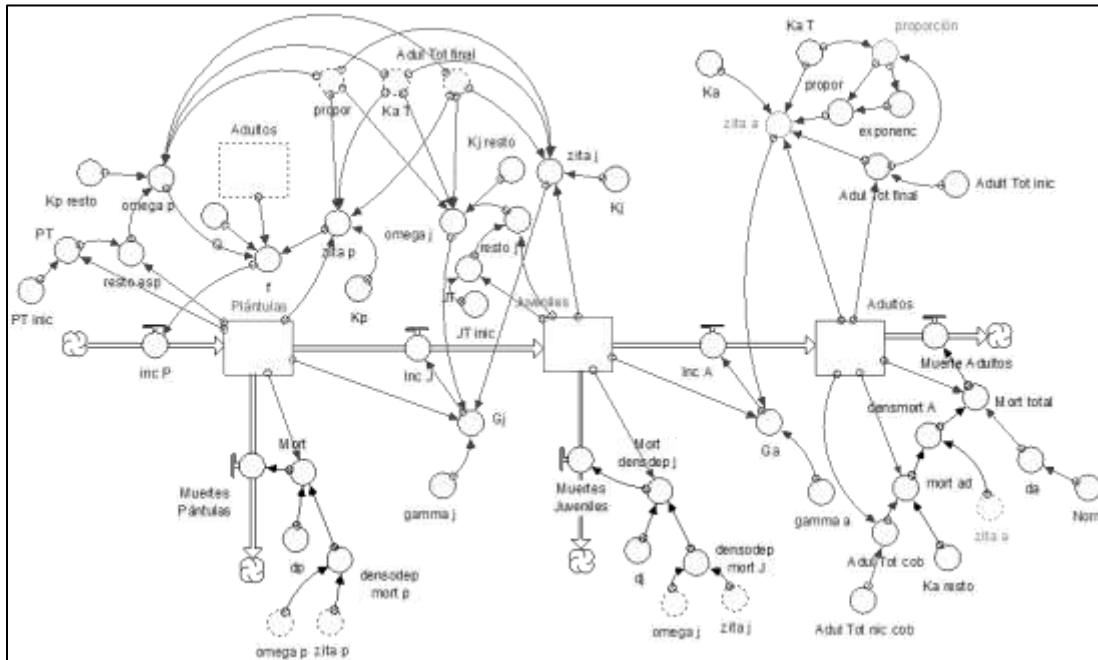


Figure 6. - System Dynamics model for the covering functional type

Colonizing and stabilizing functional type

System dynamics model for colonizing and stabilizing species that need open space to reach adulthood (Figure 7).



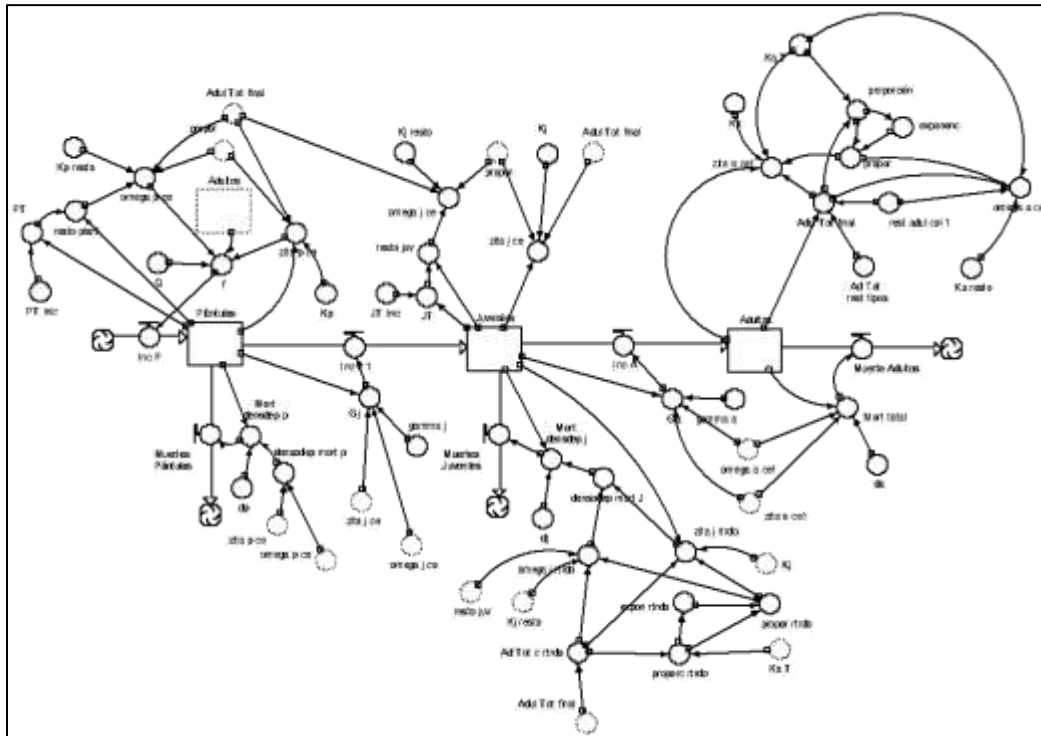


Figure 7. - System Dynamics model for colonizing and stabilizing functional type 1

Colonizing and stabilizing functional type

System dynamics model for colonizing and stabilizing species that can reach adulthood below adults of other species (Figure 8).



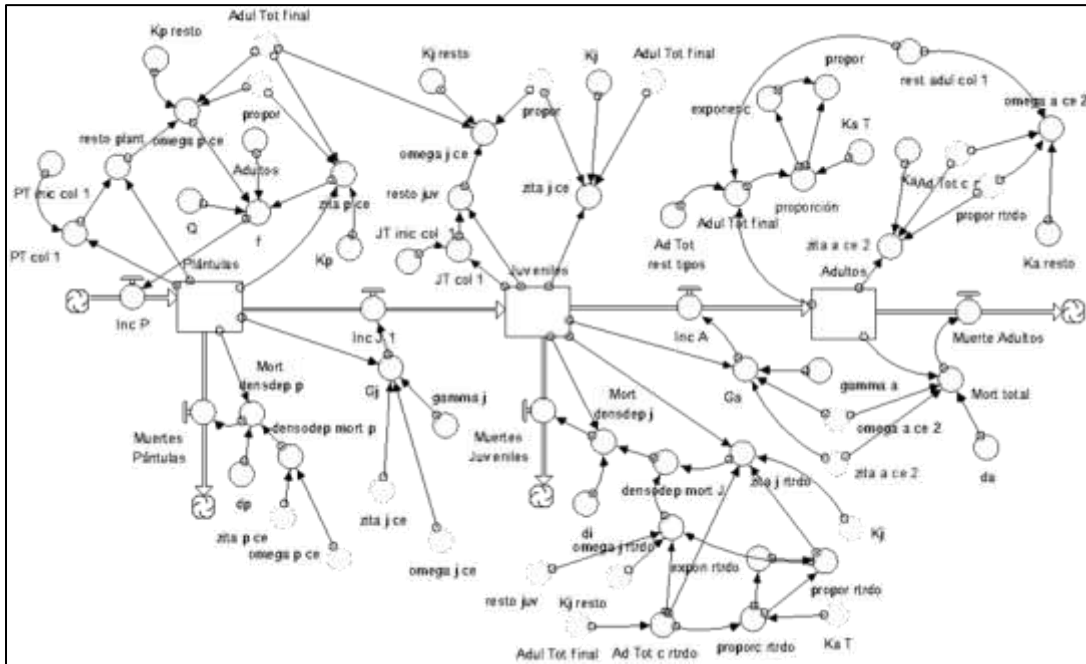


Figure 8. - System Dynamics model for colonizing and stabilizing functional types

II.2. Interactions Module

Functional model corresponding to the interactions module. In this model the information related to the adults of the species verified as facilitators or excluding competitors was formalized, with the variables of seedling and juvenile change of the species on which some influence could be confirmed (Figure 9).



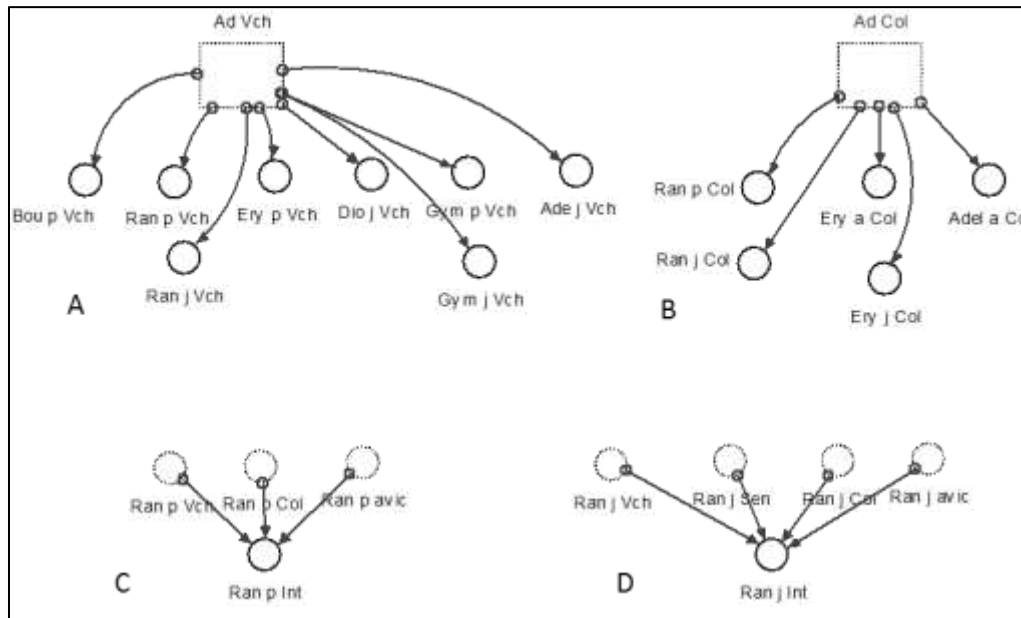


Figure 9. -Elements of the interaction module

Note: Ad Vch, Ad Cl (Total adults of *Vachelia machracantha* and *Colubrina elliptica*) Bou p Vch, Ran p Vch, . Increase in seedlings of *Randia aculeata*, *Bourreria virgata*, due to the presence of adults of *Vachelia machracantha* (or *Colubrina elliptica*), the same for Ran j Vch or Ran j Col, in this case it is the increase in juveniles of the species. Ran p int, Ran j int is the total increment of seedlings or juveniles of *Randia aculeata* by the total interactions with the rest of the species.

II.3. Module of disturbances

Figure 9 shows the disturbance module of the model. The disturbances in this module correspond to those presented by Salmerón-López *et al.* (2016a): crops, charcoal manufacture, clear cutting, selective logging, fires, weed clearing, and grazing, which coincided with the disturbances evidenced in the area. The model considered the magnitude, timing, and time passed after the occurrence to evaluate the level of disturbance of each site as very, little, or moderately disturbed (Figure 10).



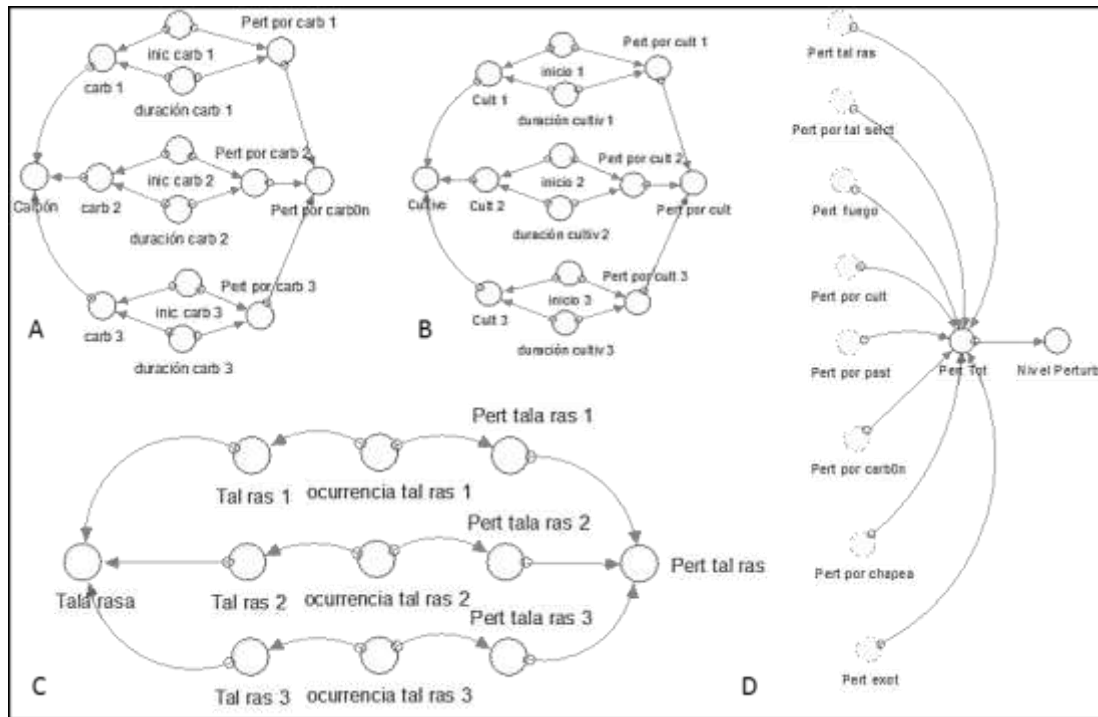


Figure 10. - Disturbance module in the system dynamics model

REFERENCIAS BIBLIOGRÁFICAS

- BIALIC-MURPHY, L., KNIGHT, T.M., KAWELO, K. y GAOUE, O.G., 2022. The Disconnect Between Short- and Long-Term Population Projections for Plant Reintroductions. *Frontiers in Conservation Science* [en línea], vol. 2. [Consulta: 6 marzo 2023]. ISSN 2673-611X. Disponible en: <https://www.frontiersin.org/articles/10.3389/fcosc.2021.814863>.
- CHIRAKKAL, H. y GERBER, L.R., 2010. Short- and long-term population response to changes in vital rates: implications for population viability analysis. *Ecological Applications* [en línea], vol. 20, no. 3, pp. 783-788. [Consulta: 6 marzo 2023]. ISSN 1939-5582. DOI 10.1890/09-0560.1. Disponible en: <https://onlinelibrary.wiley.com/doi/abs/10.1890/09-0560.1>.



https://www.researchgate.net/publication/334846896_Plant_facilitation_as_a_tool_to_restore_diversity_and_ecosystem_functions.

OSTERTAG, R., WARMAN, L., CORDELL, S. y VITOUSEK, P.M., 2015. Using plant functional traits to restore Hawaiian rainforest. *Journal of Applied Ecology* [en línea], vol. 52, no. 4, pp. 805-809. [Consulta: 6 marzo 2023]. ISSN 1365-2664. DOI 10.1111/1365-2664.12413. Disponible en: <https://onlinelibrary.wiley.com/doi/abs/10.1111/1365-2664.12413>.

PAINE, C.E.T., BARALOTO, C., CHAVE, J. y HÉRAULT, B., 2011. Functional traits of individual trees reveal ecological constraints on community assembly in tropical rain forests. *Oikos* [en línea], vol. 120, no. 5, pp. 720-727. [Consulta: 6 marzo 2023]. ISSN 0030-1299. Disponible en: <https://www.jstor.org/stable/29783565>.

REYES, J. y ACOSTA, F. 2005. *Vegetación Terrestre en Cuba: Siboney-Juticí. Rapid Biological Inventories, Report 10. The Field Museum, Chicago. 73 p.*

RUIZ, A., 2005. *Rapid Biological Inventories Report 10. Cuba: Siboney-Juticí. [en línea]. S.l.: s.n., pp. 47-50. ISBN 978-0-914868-58-3. Disponible en: https://www.researchgate.net/publication/257921577_Rapid_Biological_Inventories_Report_10_Cuba_Siboney-Jutici.*

SALMERON LÓPEZ, A. 2016. *Dinámica funcional del bosque semideciduo micrófilo en la Reserva ecológica Siboney Juticí, zona núcleo de la Reserva de la Biosfera Baconao. Tesis de Doctorado. [Consulta: 6 marzo 2023]. ISBN 978-0-444-64130-4. Disponible en: https://rc.upr.edu.cu/jspui/handle/DICT/1952.*

SALMERON LÓPEZ, A. y GEADA LÓPEZ, G., 2016. Estructura regenerativa funcional en el bosque semideciduo micrófilo de la Reserva Ecológica Siboney Juticí. *Revista Forestal Baracoa* [en línea], vol. 35, pp. 83-91. Disponible en: <https://rc.upr.edu.cu/jspui/handle/DICT/2571>.



SALMERÓN LÓPEZ, A., GONZÁLEZ RODRÍGUEZ, A. y GEADA LÓPEZ, G., 2016. Tipos funcionales de plantas según su respuesta a las perturbaciones en un bosque semideciduo micrófilo costero de Cuba Oriental. *Bosque (Valdivia)* [en línea], vol. 37, no. 1, pp. 135-145. [Consulta: 6 marzo 2023]. ISSN 0717-9200. DOI 10.4067/S0717-92002016000100013. Disponible en: http://www.scielo.cl/scielo.php?script=sci_abstract&pid=S0717-92002016000100013&lng=es&nrm=iso&tlng=es.

SALMERÓN LÓPEZ, A., y GEADA LÓPEZ, G., 2018. Interacciones entre plantas en un bosque semideciduo micrófilo de Cuba Oriental. *Bosque (Valdivia)* [en línea], vol. 39, no. 2, pp. 347-356. [Consulta: 6 marzo 2023]. ISSN 0717-9200. DOI 10.4067/S0717-92002018000200347. Disponible en: http://www.scielo.cl/scielo.php?script=sci_abstract&pid=S0717-92002018000200347&lng=es&nrm=iso&tlng=es.

SOLIVERES, S., ELDRIDGE, D.J., MAESTRE, F.T., BOWKER, M.A., TIGHE, M. y ESCUDERO, A., 2011. Microhabitat amelioration and reduced competition among understory plants as drivers of facilitation across environmental gradients: Towards a unifying framework. *Perspectives in Plant Ecology, Evolution and Systematics* [en línea], vol. 13, no. 4, pp. 247-258. [Consulta: 6 marzo 2023]. ISSN 1433-8319. DOI 10.1016/j.ppees.2011.06.001. Disponible en: <https://www.sciencedirect.com/science/article/pii/S1433831911000370>.

VALIENTE-BANUET, A. y VERDÚ, M., 2008. Temporal Shifts from Facilitation to Competition Occur between Closely Related Taxa. *Journal of Ecology* [en línea], vol. 96, no. 3, pp. 489-494. [Consulta: 6 marzo 2023]. ISSN 0022-0477. Disponible en: <https://www.jstor.org/stable/20143487>.

VASQUEZ VALDERRAMA, M. y SOLORZA-BEJARANO, J., 2017. Agrupación funcional de especies vegetales para la restauración ecológica de ecosistemas de montaña, Bogotá, Colombia. *Colombia forestal* [en línea], vol. 21, no. 1, pp. 5. DOI 10.14483/2256201X.11730. Disponible en:



